

Marion County TN Voters Handbook

2025-2026



A MESSAGE FROM THE MARION COUNTY ELECTION COMMISSION

Marion County Voter –

We know life gets busy, and elections might not always be at the top of your to-do list, especially during years without the "big" races. But here's the truth: every election matters, no matter how big or small. Local and state elections have a direct impact on your community—whether it's who's making decisions about your kids' schools, the roads you drive on every day, or how your tax dollars are spent.

This handbook is here to make voting simple and stress-free. Inside, you'll find everything you need to know about registering to vote, using the voting equipment, what ID to bring, where to vote, and how to get help if you need it. We've also included info about our Marion County constitutional offices, a quick guide to the Electoral College, and links to even more helpful resources.

Voting isn't just a right—it's a way to shape the future of your hometown. Whether it's a federal election or a local race in an "off" year, your voice matters. Every single vote counts in shaping the direction of Marion County, Tennessee, and our country.

If you have any questions, big or small, please reach out. We're here to help. Let's make sure Marion County is heard loud and clear at the ballot box!

See you at the polls,
David Riley
Marion County Administrator of Elections

Election Commission
Russ Hood, Chair
Anita Tipton, Secretary
Vanessa Blevins
Deb Conley
Rhkisha Whisnant

Marion County Election Commission
109 Academy Street
Jasper, TN 37347
(423) 942-2108 (Landline)
marion.commission@tn.gov

TABLE OF CONTENTS

Registering to Vote	4
Items Needed to Complete Voter Registration	5
Keeping Voter Registration Updated	5
What You Will Need to Vote & Photo ID	6
Registered By-Mail Information	7
Voter Registration if Moved	8
Redistricting Information	10
Voting Method Options	10
2026 Election Calendar	12
Being Prepared for 2026 Elections.....	13
Using the Voting Machines	13
Help America Vote Act	14
Provisional Voting	15
Party Primary and General Elections	15
Electoral College	16
General Qualifications for Candidates	17
Constitutional Offices	
• County Mayor	17
• County Commissioners	18
• Sheriff	19
• County Clerk	20
• Assessor of Property	21
• Register of Deeds	22
• County Trustee	23
• Circuit Court Clerk	24
• School Board	25
• Constables	26
• Judges	27
Early Voting	28
Election Day Voting	28
Absentee Voting	29
Military Voting	32
Restoration of Voting Rights	36
Sample Ballots	37
Candidate Information	37
Poll Worker & Adopt A Precinct Information	37

REGISTERING TO VOTE

Recently moved to Marion County? Welcome! Just remember, whether you've moved here from another Tennessee county or another state, you *must* register to vote in Marion County to be eligible to cast your ballot here. Looking at turning eighteen before the next election (currently, the county offices primary on May 5, 2026 is the next anticipated election)? Great, congratulations. One thing you want to make sure you take advantage of is making your voice heard at the ballot box!

Registering is easier than you think. You can grab a voter registration form from a lot of places:

- **Marion County Election Office**
- **Department of Safety (where you get your driver's license)**
- **County Health Department**
- **Department of Human Services**
- **Marion County libraries**
- **Public Assistance offices**
- **Marion County Clerk's Office**
- **Or just download it online at www.marionvotes.com/voter-registration/**

When you renew or update your driver's license, the Department of Safety might even send you a voter registration form in the mail. Just fill it out and send it to us.

Here's how to send it:

 **Mail it to us:**

Marion County Election Commission
109 Academy Street
Jasper, TN 37347-3520

Or just stop by our office and drop it off! If you come in person, bring a photo ID that shows your correct address. If your ID doesn't show your current address, no worries—just bring a photo ID and two pieces of mail (like a utility bill, bank statement, or insurance card) that show your name and current address. That will allow us to get you registered. If you relocate, even within Marion County, to simplify and speed up your actual voting experience, go ahead and get your ID updated with your current, correct address.

Once we process your form, we'll mail your voter registration card to you. **You're officially registered to vote once you get that card in the mail.**

Have questions? Just give us a call or visit www.marionvotes.com. We're here to help you make your voice heard

To register to vote, **ALL** of the following qualifications must be met:

- **Citizen of the United States; and**
- **At least eighteen (18) years old on or before the date of the next election; and**
- **Resident of the State of Tennessee; and**
- **Not have been convicted of a Felony or have had your Voting Rights restored as required by law**

IMPORTANT INFORMATION BEFORE FILLING OUT VOTER REGISTRATION

- Downloaded form should be printed on **WHITE** paper only.
- Use **black** or **blue** ink only to complete form.
- Complete **every** question on form including **ALL FOUR YES/NO questions**.
- Tennessee requires your Social Security Number & Date of Birth in order to register to vote.
- You must include the City & State of your birth.
- You do not register by party in Tennessee; you will choose party ballots at the time of voting if the election is a primary
- This form can be used for either change of address or name change if you are already registered in Marion County.
- 🚨 **Heads up:** You must be registered at least **30 days before an election** to vote in that election.

KEEPING YOUR VOTER REGISTRATION UPDATED

Once you are registered to vote in Marion County and have received your voter registration card there is no requirement to “renew” your registration if you remain at the same residential address. You do need to update your registration to keep your status as an Active Voter in Marion County.

Always contact the Election Commission in writing, **with your signature**, if:

- You change your name due to marriage or divorce
- You move within Marion County
- You receive any correspondence from the Election Commission where we need a response from you.

If you do move, simply download another Voter Registration form and resubmit it with the new residential address. We'll send you a voter card to that new address, so you know you're good to go.

If you have moved to another county or another state, you will be required to register to vote in

that county or state.

Please contact the Marion County Election Commission with any questions or for more information about registering for voting. You can make changes to correct your existing registration address or name up until the fifth day before each election.

WHAT WILL I NEED TO BRING WITH ME TO VOTE?

Review Your Voter Registration Card Carefully

When you receive your voter registration card, take a moment to ensure all the information is accurate. This card includes:

- Your name and residential address
- Your County Commission District/County School Board District/Constable District
- Your State House of Representatives District (Dist 39 as of 2022)
- Your State Senate District (District 10 as of 2022)
- Your U.S. Congressional District (TN4 as of 2022)

If you reside in one of Marion County's eight municipalities, your municipal district will also be listed. Specifically, for residents of South Pittsburg, your card will indicate your specific municipal district within the city.

Found an error?

If any information seems incorrect or if you have questions, please contact the Marion County Election Commission Office promptly. Accurate registration details ensure you're voting in the correct districts and races.

Voting Without Your Voter Registration Card

You are not required to bring your voter registration card to vote during Early Voting or on Election Day. However, Tennessee law mandates that you present an approved photo ID issued by the State of Tennessee or the U.S. Government.

Acceptable forms of photo ID include :

- Tennessee driver's license with your photo (even if expired)
- Tennessee Department of Safety and Homeland Security photo ID
- U.S. Passport
- U.S. Military ID
- Tennessee handgun carry permit with your photo

Please note: College student IDs and photo IDs issued by other states are not acceptable. County or Municipal issued photo IDs (i.e. library cards or city employee IDs) are also ineligible for voting ID purposes



SOS Don't Have a Valid Photo ID?

If you lack an acceptable photo ID, you can obtain one free of charge from the Tennessee Department of Safety and Homeland Security at any participating Driver Service Center. To get this ID, you'll need:

- Proof of U.S. citizenship (e.g., a birth certificate)
- Two documents proving Tennessee residency (e.g., utility bill, vehicle registration, or bank statement)

For more details on obtaining a free photo ID, visit the [Tennessee Department of Safety & Homeland Security](https://www.tn.gov/safety/driver-services/photoids.html). (<https://www.tn.gov/safety/driver-services/photoids.html>)

For any further questions or assistance, please reach out to the Marion County Election Commission Office. We're here to help ensure your voting experience is smooth and your voice is heard.

WHAT IF I REGISTERED BY MAIL AND AM VOTING IN MY FIRST ELECTION?

Federal law requires first time voters who register by mail to present one of the following:

- A current TN or federally issued photo identification with voter's name and photo **OR**
- If the photo identification is expired, the voter must also present one of the following: a copy of a current utility bill, bank statement, government check, paycheck or government document that shows the voter's name and address.

PROTECTING YOUR VOTE

No eligible voter will be turned away at the polls. Voters who do not bring a Photo ID to the polls can vote using a provisional ballot, which will be counted assuming the voter returns to the Marion County Election Commission office within two (2) business days after the Election Day with a valid Photo ID.

Examples and a list of acceptable IDs can be found at www.marionvotes.com/photo-id-requirements/

I HAVE MOVED SINCE I LAST VOTED OR SINCE I LAST VOTED?

The voter registration application also serves as a name and/or address change request. Complete and sign the form. **When updating your address within the county, the form may be mailed, faxed, or emailed with an attached document which includes a scanned signature or submitted in person to our office.** When updating one's name, the form must be mailed or taken to our office. The form must be signed and received no later than five (5) days before the election in order to process the change.

Pursuant to TCA § 2-2-107, a person shall be registered as a voter of the precinct in which the person is a resident. This is important because you should only vote on candidates that you are eligible to vote for based on your residence.

You may change your address when you vote on Election Day. However, taking care of the change before coming to vote will save you time, paperwork and possibly having to drive to another polling place to vote.

When you apply to vote, you affirm, under the penalty of perjury, that the information you have provided on your application is correct. Providing false information on your voter application is a felony. (TCA § 2-19-107)

WHAT IF I DON'T WANT TO OR CAN'T VOTE ON ELECTION DAY?

You may vote at the Early Voting location in Marion County during the Early Voting period. Early Voting is convenient, fast and you can avoid the possibility of missing an opportunity to vote on Election Day for any unforeseen reason. The Early Voting location is the Marion County Election Commission office at 109 Academy Avenue, Jasper, TN, 37347-3520. Maps to the Early Voting and Election Day precincts are available online at www.marionvotes.com/polling_locations/. On Election Day, voters **MUST** vote at their assigned precinct on their voter card.

HOW WILL I KNOW WHICH OFFICES I'LL BE VOTING FOR?

You should have a voter registration card. It is important that you check the card for accuracy. The card will have your name and residential address on it. The card will also have the County Commission/County School Board/Constable district, State House of Representatives District, State Senate District and U.S. Congressional District you are represented by. If you live in any of the eight municipalities, those wards or districts will also be listed on your card. **PLEASE CONTACT THE ELECTION COMMISSION OFFICE IF YOU HAVE ANY CONCERNS ABOUT THE ACCURACY OF THE VOTING INFORMATION ON YOUR CARD (423-942-2108).**

WHAT IF I DID NOT RECEIVE A VOTER REGISTRATION CARD?

You may not have received a new voter card if any of these conditions apply to you:

- Your address has changed from the one on your registration
- Your name has changed from the one on your registration
- You have been designated as an “inactive voter” for one of several reasons
- You are **NOT REGISTERED TO VOTE**

PLEASE CONTACT THE ELECTION COMMISSION OFFICE IF YOU HAVE NOT RECEIVED A NEW VOTER REGISTRATION CARD AND BELIEVE YOU SHOULD HAVE.

WHEN IS THE LAST DAY I CAN REGISTER TO VOTE?

You may register until 30th day before each election at the close of business. Registrations received after the deadline before each election will be processed after the election.

DO I NEED A NEW VOTER REGISTRATION CARD WHEN I COME TO VOTE?

No, you do not need your voter card to vote during early voting or on Election Day, but, not to belabor the point, **YOU MUST HAVE A TENNESSEE STATE OR FEDERALLY ISSUED PHOTO ID TO VOTE.** The voter registration card does not exempt you from having a Photo ID to vote. You can vote without a voter registration card but not without a photo ID.

REDISTRICTING BASED ON 2020 CENSUS

What is Redistricting?

Redistricting is the redrawing of County Commission, State Senate, State House, US Congress, Constable, School Board and City Ward or District lines to ensure that every citizen is equally represented. Each district has an approximate equal number of residents according to the 2020 census. Geographically, some districts are larger or smaller than the others. The population of each district, no matter its geographical size, is approximately equal in population.

How many people are in a County Commission District?

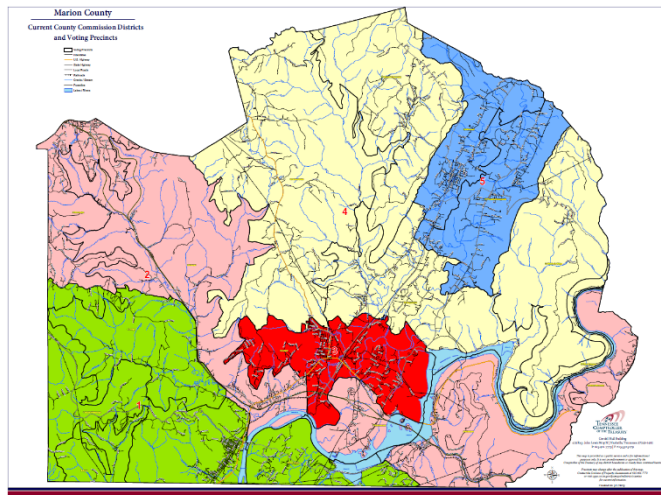
There are approximately 5909 individuals in each County Commission District. This is based on the 2020 Federal Census.

Who determines where the new district lines will be?

The decision makers are the elected officials who have the statutory authority to locate the district lines on census block boundaries.

Marion County Commission Districts

- **The Tennessee General Assembly:**
Congressional Lines
State Senate Lines
State House Lines
- **Marion County Commission:**
County Commission Districts
School Board Districts
Constable Districts
- **City Council/County Commission:**
City Council Wards/Districts
- **Marion County Election Commission:**
Precinct Boundaries
Polling Places



2026 Marion County TN Election Calendar

County Primary Election – May 5, 2025

1st Day to Pick Up Petition - Monday, December 22, 2025

Qualifying Deadline - Thursday, February 19, 2026, 12:00 NOON

- *This qualifying deadline applies to primary candidates and independent candidates for the offices on the May primary ballot and August General ballot*

Withdrawal Deadline - Thursday, February 26, 2026, 12:00 NOON

Voter Registration Deadline - Monday April 6, 2026

Early Voting -- Wednesday, April 15, through Thursday, April 30, 2026

Absentee Ballot Request Deadline -- Saturday 25, 2026

Primary races include: All 15 County Commission Seats (3 per district), County Mayor, Sheriff, County Clerk, County Court Clerk, County Trustee, Register of Deeds, Marion County School Districts 3, 4, & 5

State/Federal Primary & County General Elections

Thursday August 6, 2026

1st Day to Pick Up Petitions – Friday, January 9, 2026

Qualifying Deadline – Tuesday, March 10, 2026, 12:00 NOON

- *This qualifying deadline applies to primary candidates and independent candidates for the offices on the August primary ballot*

Withdrawal Deadline – Tuesday – March 17, 2026, NOON

Voter Registration Deadline – Tuesday, July 7, 2026

Early Voting – Friday, July 17 through Saturday, August 1, 2026

Absentee Ballot Request Deadline – Monday, July 27, 2026

State/Federal Primary races include: Governor, US Senate, US House (TN4), State Representative (Dist 39), Republican Executive Committee members (Dist 10), Democrat Executive Committee members (Dist 10); General Election includes winners of May Primaries and any independent

State/Federal General & Municipal General Elections

Tuesday, November 3, 2026

1st Day to Pick Up Petitions – Monday, June 22, 2026

Qualifying Deadline Municipal – Thursday, August 20, 2026 NOON

Withdrawal Deadline – Thursday, August 27, 2026, NOON

Voter Registration Deadline – Monday, October 5, 2026

Early Voting – Wednesday, October 14 through Thursday, October 29, 2026

Absentee Ballot Request Deadline – Saturday, October 24, 2026

2026 Marion County Election Calendar

Possible County Primary Election --- May 5, 2026

1st Day to Pick-Up Petitions -- December 22, 2025

Candidate Qualifying Deadline -- February 19, 2026- **NOON**

Withdrawal Deadline -- February 26, 2026-**NOON**

Last Day to Register to Vote -- April 6, 2026
1st Day to Request Absentee Ballot – February 4, 2026
Last Day to Request Absentee Ballot -- April 25, 2026
Anticipated Early Voting—April 15th through April 30th

Offices Eligible for County Primary

Including Sheriff, Trustee, Circuit Court Clerk, County Clerk, County Mayor, Register of Deeds, All County Commission Districts, Marion County School Board Members - Districts 3, 4, & 5, Richard Hardy Special School Board —

Federal & State Primary Election/County General ---August 6, 2026

1st Day to Pick-Up State/Federal Primary Petitions – February 2, 2026
Candidate Qualifying Deadline -- April 2, 2026 - **NOON**
Withdrawal Deadline -- April 9, 2026 - **NOON**
Last Day to Register to Vote -- July 7, 2026
1st Day to Request Absentee Ballot May 8, 2026
Last Day to Request Absentee Ballot July 27, 2026
Early Voting—July 17th through August 1st

Offices Eligible for Federal & State Primary

Including U.S. Senate, U.S. Congress- District 4,
Governor, State Senate - District 10, State Representative- District 39
Republican Executive Committeeman & Committeewoman- 10th District
Democratic Executive Committeeman & Committeewoman- 10th District

November General/City Elections----November 3, 2026

1st Day to Pick-Up Municipal/City Petitions -- June 22, 2026
Municipal/City Candidate Qualifying Deadline -- August 20, 2026- **NOON**
Withdrawal Deadline -- August 27, 2026- **NOON**
Last Day to Register to Vote -- October 5, 2026
1st Day to Request Absentee Ballot -- August 5, 2026
Last Day to Request Absentee Ballot -- October 24, 2026
Early Voting -- October 14th thru October 29th

Offices Eligible for Municipal Elections

Town of Jasper—Alderman At Large (2), **Town of Kimball**-Alderman At Large (2), **Town of Monteagle**-Mayor & Alderman At Large (4), **City of New Hope**-Alderman At Large (2), **Town of Orme**-Commissioner At Large (3), **Town of Powells Crossroads**-Mayor & Alderman At Large (1), **City of South Pittsburg**-Commission Seat Districts 3 & 4, **City of Whitwell**-Commission At Large (2)



Be Prepared for the 2026 Elections

The 2026 elections will be busy. By having the proper photo ID and being educated on the candidates before coming to vote you will be prepared and able to vote quicker, allowing for shorter wait times at the polls.

Make your voting experience the best it can be in 2026. Prepare yourself for the ballot by becoming familiar with what offices are being elected and who the candidates are before coming to the polls. You can reference sample ballots on the Election Commission's website (www.marionvotes.com/sample-ballots/). You can also search the internet for candidate websites or more broad application and website platforms aimed at mobilizing and informing voters (i.e. ActiVote app, Ballotpedia), as well as local media outlets such as [Sequatchie Valley Now](http://SequatchieValleyNow.com), (<https://svalleynow.com/>) and [Marion Tribune](https://www.mariontribune.com/) (<https://www.mariontribune.com/>)

USING THE VOTING MACHINES

Once you complete your voting and ballot application, you will be given a slip of paper with your individual pin number on it as well as a blank ballot sheet. You will enter this pin into the polling machine to begin the voting process. You will also insert the blank ballot into the marking device. Should you have difficulty, please feel free to ask one of the polling place workers over to help you get started; that's what they're there for – to make sure your voice is heard! Once you're comfortable with the ballot and are at the end of the ballot, but realize you expected a particular candidate on the ballot that you didn't see? Again, before you continue, please call one of the polling place workers and ask the question. Often, the issue turns out to be one candidate who might be on the other party's PRIMARY ballot and you won't see them until the GENERAL election. Once you are comfortable that you have completed your vote, use the double confirmation prompt and your ballot will begin printing. **PLEASE NOTE: YOU HAVE NOT CAST YOUR VOTE AT THIS POINT. YOU MUST INSERT THIS PRINTOUT INTO THE SCANNER ON YOUR WAY OUT OF THE POLLING PLACE IN ORDER FOR YOUR VOTE TO BE COUNTED.** You can watch a video showing this process at the [Election Commission's website](#) under "Voter Tools" and "Voting "How To" Video."

The poll official is available to answer any questions you may have about *how* to operate the voting machine but cannot give opinions about *who* to vote for.

The ballot may be several pages. You are not required to vote in all contests, but you do have to look through the entire ballot.

WHAT ACCOMMODATIONS ARE THERE FOR ELDERLY, DISABLED, AND VISUALLY IMPAIRED VOTERS?

In accordance with the federal Help America Vote Act (HAVA) and state law, Marion County has an accessible voting unit for every polling place in the county. The accessible voting unit is

available at each polling place for every primary or election conducted under Tennessee General Laws, Title 2.

When the registered voter arrives at the polling place, the voter will proceed to the check-in table and will identify himself/herself. The voter will tell registrars at the check-in table that they need assistance in using the voting equipment and will be directed to the designated accessible voting unit.

- › Each polling place will have at least one handicapped-accessible voting booth designated for priority use by disabled or elderly voters. Other voters may use the voting booth only when there are no disabled or elderly voters waiting to vote.
- › Each polling place will be equipped with a sheet magnifier to assist voters who are visually impaired.



WHAT CAN I DO IF MY ASSIGNED POLLING PLACE DOES NOT HAVE SATISFACTORY ACCOMMODATIONS FOR MY DISABILITY?



All Early Voting and Election Day polling places in Marion County have been surveyed and are ADA compliant. If you are a voter with a disability and the polling location where you are assigned to vote is inaccessible to you for any reason, you must notify the Marion County Election Commission not less than 10 days from Election Day.

PROVISIONAL VOTING OPTIONS

If you are not on the signature list or do not have an acceptable form of identification, you will be allowed to cast a provisional ballot. The Provisional Counting Board will meet and based on all of the information provided and eligibility, your ballot may or may not be counted. You will be notified, in writing, whether or not your ballot was counted.

GENERAL ELECTION VERSUS PRIMARY ELECTION

A possible Marion County Republican & Democratic Primary will be held on May 5, 2026. The Federal/State Primary & County General will be held on August 6, 2026. These elections will be Primary Elections for the parties to choose their candidates for the General Elections.

The November 3, 2026, election will be a Federal & State General Election and various municipal, non-partisan position, General Elections for Monteagle, Jasper, South Pittsburg, Whitwell, Powells Crossroads, Orme, Kimball, and New Hope.

A **Primary Election** is a nominating election.

Voters that vote in a Primary Election consider themselves Republicans or Democrats - there are no Primary Elections for Independents. To vote in the primary, for either party, you will be required to choose which party primary you wish to vote in on your voter application.



Tennessee has two recognized parties – the Republican Party and the Democratic Party. Tennessee holds “Open Primaries”. You are not registered as a member of any party and may vote as your current party allegiance allows.

“A registered voter is entitled to vote in a primary election for offices for which the voter is qualified to vote at the polling place where the voter is registered if:

- 1. The voter is a bona fide member of and affiliated with the political party in whose primary the voter seeks to vote; or*
- 2. At the time the voter seeks to vote, the voter declares allegiance to the political party in whose primary the voter seeks to vote and states that the voter intends to affiliate with that party.” TCA §2-7-115 (b)*

Winning the party’s nomination in a Primary Election is the first step in the election process. It narrows the field in a political party to one individual for a specific office. The winner of the party primary in May will be on the County General ballot in August and the winner of the party primary in August will be on the general election ballot in November representing their party.

You do not have to vote in the primary elections. You may choose to vote only in the Marion County General Election for the August General Election. The anticipated May 5, 2026 election, however, is only a Primary Election and will require the voter to choose a party ballot.

A **General Election** is the election in which all voters make the **final choice** from among the party nominees and the independent candidates for a specific office.

In August, the winners in Marion County offices on the general ballot will take office on September 1, 2026. The winners of the primaries on the August ballot will appear on the general ballot in November and the winners will take office January 1, 2027.

Municipal offices are never partisan races by state law.

BRIEF REVIEW OF THE ELECTORAL COLLEGE FOR U.S. PRESIDENT (NOT APPLICABLE IN 2026)

Established in Article II, Section 1 of the U.S. Constitution, the Electoral College is the formal body which elects the President and Vice President of the United States. Each state has as many "electors" in the Electoral College as it has Representatives and Senators in the United States Congress, and the District of Columbia has three electors. When voters go to the polls in a Presidential election, they actually vote for the slate of electors who have vowed to cast their ballots for that ticket in the Electoral College.

The Presidential election process follows a typical cycle:

Time of the year	Event
Spring of the year before an election	Candidates announce their intentions to run.
Summer of the year before an election through Spring of the election year.	Primary and caucus debates take place.
January to June of election year	States and parties hold primaries and caucuses.
July to early September	Parties hold nominating conventions to choose their candidates.
September and October	Candidates participate in presidential debates.
Early November	Election Day is the first Tuesday after the first Monday.
December	Electors cast their votes in the Electoral College.
Early January of the next calendar year	Congress counts the electoral votes.
January 20	Inauguration Day

QUALIFICATIONS FOR OFFICES

Tennessee State Law sets out some general qualifications that ALL candidates must meet to be on the ballot. Individual offices may have additional requirements.

Tennessee State Law

GENERAL QUALIFICATIONS FOR ELECTED OFFICE:

All persons 18 years old and over, who are citizens of the United States and of Tennessee, and who meet certain residency requirements (these differ by office) are qualified to hold office ***unless*** the person:

- Has been convicted of offering or giving a bribe, of larceny, or, of any other offense declared infamous by law, unless the person has been restored to citizenship as prescribed by law
- Has not paid a judgment for money received in an official capacity, which is due to the United States, Tennessee or any county
- Has defaulted to the treasury at the time of election
- Is a soldier, seaman, marine or airman in the regular United States Army, Navy or Air Force
- Is a member of Congress or holds any office of profit or trust under any foreign power, other state of the Union or the United States

(There are additional qualifications for offices such as Sheriff, School Board, etc.)

CONSTITUTIONAL OFFICES

The following are general descriptions of the origin, qualifications, duties and other general information about the Constitutional Offices in Marion County. These descriptions are intended to give you a general understanding of each office. The elected offices included have many more detailed duties and other official requirements than are included here. For detailed information please visit [CTAS](#) TCA Title 8.

COUNTY MAYOR

The County Mayor is the administrative head of the county. This office was created as a constitutional office in 1978 by an amendment to Article 7, Section 1 of the Tennessee Constitution.

The County mayor is elected by the people of the county for a term of four years.

Qualifications for County Mayor:

- All general qualifications for holding office in Tennessee;

- Must be at least 25 years old;
- Must be a qualified voter of the county;
- A resident of the county for at least one year prior to filing a petition for the office.

The position is full-time and compensation is set by state law.

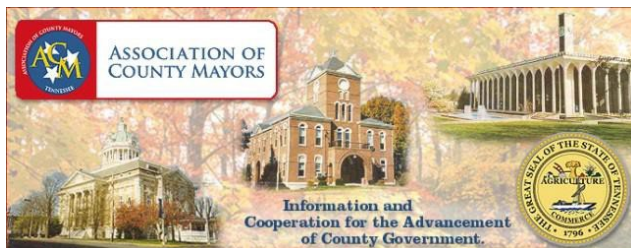
The County mayor serves as a non-voting, ex-officio member of the legislative body (the County Commission). They also serve as a non-voting, ex-officio member of most committees of the commission.

The County mayor may be elected as the chairperson of the Commission. As Chairperson, the Mayor may cast a vote only in the event of a tie. If the mayor chooses not to be the chairperson of the commission, he has veto power over most legislative resolutions.

The County Mayor is the Chief Financial Officer of the county. The County Mayor has the care and custody of all county property.

The County Mayor may enter into “letters of agreement” with county fee officials.

The County mayor performs other duties and shares administrative tasks with other constitutional officers and statutory county officials.



COUNTY COMMISSIONERS

The Marion County commission is made up of 25 individuals elected from the each of the 25 county commission districts for a four year term.

Qualifications for County Commissioner:

- Attained the age of 18;
- Citizen of the United States;
- Citizen of Tennessee;
- Resident of their district when qualified;
- Cannot be an elected county official
- Comply with all general requirements for holding office in Tennessee.

The compensation of County Commissioners is fixed by resolution of the County Commission but not for less than the minimum compensation set by the General Assembly.

They are required to meet at least four times per calendar year. The Marion County Commission meets monthly.

The County Commission is required to adopt a balanced budget and appropriate funds for the ensuing fiscal year for all county departments and agencies.

The County Commission can levy a county property tax without limitation to rate to fund the county budget. The county property tax is the only significant source of revenue for the county.

The County Commission also has the duties of:

- Accepting and maintaining county roads
- Passing general laws regarding financial management, budgeting and purchasing
- Issuing county debt instruments, i.e. bonds and notes
- Providing facilities for courts, jails and for certain county officials
- Planning and zoning for areas outside of municipalities
- Passing a countywide personnel policy
- Animal control
- Securely maintaining county records
- Other duties given them by the legislature



To learn more about TN County Commissioners, go to

https://www.tncounties.org/TCCA/About_Us/TCCA/About.aspx?hkey=33a25ce6-c4ed-4001-81fd-4e1a22853b73

SHERIFF

The Sheriff, as a constitutional office, has been included in Tennessee's three Constitutions (1796, 1835 and 1870). The Sheriff is elected by the people of the

county for a four year term.

Qualifications for Sheriff:

- All general qualifications for holding office in Tennessee;
 - Must be at least 25 years old;
 - Must be a qualified voter of the county;
 - Must have obtained a high school diploma, or its equivalent;
- (CONT)
- Must not have been convicted, pled guilty or pled nolo contendere to any felony charge or any violation of any federal or state laws or city ordinances related to force, violence, theft, dishonesty, gambling, liquor or controlled substances, so long as the violation involves an offense that consists of moral turpitude, or misdemeanor crime of domestic violence;
 - Must be finger printed under the direction of the Tennessee Bureau of Investigation and have the TBI make a search of local, state and federal finger print files for any criminal record;
 - Must not have been released from the armed forces of the United States with a dishonorable or bad conduct discharge, or as a consequence of conviction at court martial for either state or federal offenses;
 - Must have been certified by a qualified professional in the psychiatric or psychological fields to be free of all apparent mental disorders as described in the Diagnostic and Statistical Manual of Mental Disorders, Third Edition, of the American Psychiatric Association or its successor;
 - Must possess a current and valid peace officer certification as issued by the Tennessee Peace Officer Standards and Training Commission (POST) within 12 months of qualification for election as Sheriff;
 - Must not be a member of the General Assembly, nor shall any practicing attorney be obligated to act as Sheriff.

The Sheriff is compensated based on state law.

The duties of the Sheriff include but are not limited to:

- Conservator of the peace and law enforcement
- Maintaining and providing a correctional facility



Visit

<http://tnsheriffs.com/>

to learn more about TN Sheriffs.

COUNTY CLERK

For years, the County Clerk was known as the County Court Clerk. In 1978, this office was made a constitutional office. The County Clerk is elected by the people of the county for a four-year term.

This office has no additional qualifications beyond the general qualifications for holding the elected office in Tennessee.

The County Clerk is compensated with a minimum salary set forth in state law. The compensation of the County Clerk does not vary with the amount of fees collected.

The duties of the County clerk are generally:

- Keeping the official records of the County Commission
- Collecting local and state taxes such as- county wheel taxes, local hotel and motel taxes, beer taxes, business taxes, and vehicle registration fees
- Issuing motor vehicle titles and registrations
- Issuing marriage licenses
- Issuing business licenses
- Processing applications for beer permits
- Process applications for notaries public
- Issuing pawn broker licenses
- Issuing hunting and fishing licenses
- Offering renewal of Tennessee Drivers licenses



www.tncountyclerk.com

ASSESSOR OF PROPERTY

The assessor of property was a statutory office for many decades before it became a constitutional office following the 1978 amendments to the Tennessee Constitution. The assessor of property is elected to a four-year term in the August general election in even numbered years in which there is not an election for governor. T.C.A. § 67-1-502. This places the election of the assessor in years different from the other county constitutional officers who are popularly elected.

This office has no additional qualifications beyond the general qualifications for holding the elected office in Tennessee.

The assessor's duties include two basic functions:

- appraisal of taxable real and personal property in the county that is not appraised by the state.
- assessment of taxable real and personal property in the county that is not appraised by the state.



To learn more:
<http://www.tnaao.org/index.htm>

REGISTER OF DEEDS

The Register of Deeds was originally an office appointed by the county legislative body, but became an elected office with the 1830 Tennessee Constitution. The Register of Deeds is elected by the people of the county for a four year term.

Register of Deeds has no additional qualifications from the general qualifications to hold elective office in Tennessee.

The compensation for the Register of Deeds is set by the legislature and has no bearing on the amount of fees collected by the office.

The duties of the Register of Deeds is to make and preserve a record of instruments required or allowed by law to be filed or recorded including, but not limited to:

• Deeds		• Plats
• Powers of Attorney		• Leases
• Deeds of Trust		• Judgements
• Mortgages		• Wills
• Liens		• Court Orders
• Contracts		• Military Discharges
• For the collecting of “transfer” and “mortgage” taxes		• Maintaining records related to the Uniform Commercial Code (UCC)

TENNESSEE REGISTERS ASSOCIATION

To learn more:

<http://tnregisters.homestead.com>

COUNTY TRUSTEE

The County Trustee was originally an office appointed by the county legislative body. The office became an elected office with the 1835 Tennessee Constitution. The County Trustee is elected by the people of the county for a four-year term.

There are no additional qualifications for County Trustee, other than the general qualifications for holding elective office in Tennessee.

Compensation for the County Trustee is set by legislature, and the compensation does not vary with the amount of fees or commissions collected by the office.

The County Trustee has three primary functions:

- Collecting all county property taxes
- Keeping a fair and regular account of all money received
- Investing temporarily in idle county funds

The County Trustee may also:

- Disburse sales tax revenues
- Collect municipal property taxes and other state and local taxes



Find more information at: www.tennessee trustee.com

CIRCUIT COURT CLERK

The Tennessee Constitution provides for counties or districts to elect a Circuit Court Clerk. The Circuit Court Clerk is elected by the people of the county for a four-year term.

There are no additional qualifications for Circuit Court Clerk beyond the general qualifications to hold elective office in Tennessee.

The minimum compensation for Circuit Court Clerk is set by the legislature. The compensation does not vary with the amount of fees or commissions collected by this office.

The Circuit Court clerk in Marion County serves the three General Sessions Courts, Criminal Court and two Circuit Courts.

The duties of the Circuit Court Clerk include:

- Attending each court session with all the papers for the cases on the docket
- Administering oaths to parties and witnesses who testify
- Keeping minutes of the court
- Maintain the rule docket and execution docket in which all court judgments or decrees are entered in order of rendition and all receipts and disbursements in a case are entered
- Maintaining indexes for all books dockets that are kept by the office
- Investing funds pursuant to law

Collecting:

- State and county litigation taxes
- Criminal injuries compensation taxes
- County expense fees
- Sheriff's fees

- Miscellaneous other court fees

For more [information](http://www.tncourts.gov/) visit: <http://www.tncourts.gov/>

SCHOOL BOARD MEMBERS

School Board members are elected by the people of the county from five districts of substantially equal population. School Board members are elected to staggered, four-year terms.

Two Districts (Districts 1 & 2) are elected in presidential election years and the remaining three (Districts 3, 4, & 5) are elected in gubernatorial election years.

Qualifications for School Board Members:

- Residents of the district they represent;
- Qualified voters of Marion County;
- Cannot be members of the Legislature or a County Official;
- Cannot be elected as a teacher or any other paid position in Marion County school system;
- Must possess a high school diploma or equivalent;
- Must attend annual training;
- All other general qualifications for holding elective office in Tennessee. There are many duties for School Board Members these include:

- Employing a Director of Schools
- To elect teachers upon the recommendation of the Director who have attained or who are eligible for tenure, to fix their salaries, and to make contracts with them
- To manage and control all public schools under its jurisdiction
- To purchase all supplies, furniture, fixtures materials of very kind through the executive committee
- To dismiss teachers, principals, supervisors and other employees upon sufficient proof of improper conduct, inefficient service or neglect of duty
- To suspend or dismiss pupils when the progress or efficiency of the school makes it necessary
- To require the Director of schools and the chair of the school board to prepare a budget and when approved by the board submit it to the County Commission
- Many other duties that are required by law and discretionary

You will find more information to run for school board by visiting:

For more information: www.tsba.net



CONSTABLES

Constables are elected by the people of the county from five districts of substantially equal population. Each Constabulary District is made up of five County Commission districts. Constables are elected for a four-year terms.

Qualifications for Constables:

- Basic qualifications of TCA 8-18-101;
- A person shall:
 1. Be at least 21 years of age;
 2. Be a qualified voter of the district and a resident of the county for one (1) year prior to the date of the qualifying deadline for running as a candidate for constable ;
 3. Possess at least a high school diploma or high school equivalency credential approved by the state board of education. Persons holding the office on or before June 30, 2011, and those reelected after July 1, 2011 without an interruption of service in the office shall only be able to read and write;
 4. Not have been convicted in any federal or state court of a felony; and
 5. Not have been separated or discharged from the armed forces of the United States with other than an honorable discharge;
- Shall file with the county election commission, in conjunction with the nominating petition:
 - 1) an affidavit sworn to and signed by the candidate affirming that the candidate meets the requirements of this section, and
 - 2) a letter from a psychologist licensed in this state who has conducted a cognitive and psychological test on the candidate stating that the candidate is mentally and cognitively fit to perform the duties of a constable. (TCA 8-10-102)
 - A constable in office on and elected prior to July 1, 2023, or a constable who filed a letter from a psychologist and is seeking reelection on or after July 1, 2023, is not required to resubmit the letter or obtain a new letter.
 - Candidates who must submit a letter from a psychologist are responsible for covering the costs of cognitive and psychological testing.

Compensation & Duties:

- Constables operate as individual officers at no cost to the citizens or governments of the county.
- Constables provide their own uniforms, vehicles, fuel and equipment and stand ready to aid or assist all citizens and/or agencies within the county.

- Their mission is to provide additional law enforcement presence in the county and to assist and supplement the county Sheriff's Office and the Police Departments.

JUDGES

Judges are elected for eight-year terms. All judges must meet the general qualifications to run for office in Tennessee as well as be practicing attorneys in Tennessee.

Marion County Voters only:

- General Sessions Judge
- Juvenile Court Judge

12th Judicial District Judges:

The 12th Judicial District is Marion, Macon, Trousdale, Smith and Jackson Counties

- Circuit Court Judges (3)
- Chancellor

Two additional offices that are elected by the voters of the 12th Judicial District for eight-year terms are:

- District Attorney General
- District Public Defender

For more information on the duties and details of these offices

please visit: www.tba.org
<https://www.tncourts.gov/jdmap>
www.tndagc.com

For more information: www.tncourts.gov/jdmap

WHEN DO I VOTE?

Early Voting

For the May 5, 2026 Election:

Early VotingApril 15th thru April 30th

For the August 6, 2026 Election:

Early VotingJuly 17th thru August 1st

For the November 3, 2026 Election:

Early VotingOctober 14th thru October 29th

During the Early Voting period voters will be able to vote at the Early Voting site in Marion County. Dates/times for Early Voting can be found on our website www.marionvotes.com when formally adopted for each election.

EARLY VOTING LOCATION:

Marion County Election Commission Office
109 Academy Avenue, Jasper, TN 37347

Election Day

On Election Day, voters will be able to vote at your assigned precinct. You can visit our website www.marionvotes.com/polling-locations/ for a complete list of the precincts and get directions.



ABSENTEE VOTING INFORMATION

What is Absentee Voting?

Absentee voting is a voting method that involves voting on a day earlier than the actual Election Day. Tennessee has two forms of absentee voting:

1. Absentee in person, which is better known as early voting, and
2. Absentee by mail, which is commonly called by-mail voting.

Who may apply to vote By-Mail Absentee?

To vote by mail, a registered voter must fall under one of the following categories:

1. The voter will be outside the county of registration during the early voting period and all day on Election Day;
2. The voter or the voter's spouse is enrolled as a full-time student in an accredited

college or university outside the county of registration;

3. The voter's licensed physician has filed a statement with the county election commission stating that, in the physician's judgment, the voter is medically unable to vote in person. The statement must be filed not less than ten (10) days before the election and signed under the penalty of perjury;
4. The voter resides in a licensed facility providing relatively permanent domiciliary care, other than a penal institution, outside the voter's county of residence;
5. The voter will be unable to vote in person due to service as a juror for a federal or state court;
6. The voter is sixty (60) years of age or older;
7. The voter has a physical disability and an inaccessible polling place;
8. The voter is hospitalized, ill, or physically disabled and because of such condition, cannot vote in person;
9. The voter is a caretaker of a person who is hospitalized, ill, or disabled;
10. The voter is a candidate for office in the election;

~~The voter serves as an election day official or as a member or employee of the election commission;~~

11. The voter's observance of a religious holiday prevents him or her from voting in person during the early voting period and on Election Day;
12. The voter or the voter's spouse possesses a valid commercial drivers license (CDL) or the voter possesses a valid Transportation Worker Identification Credential (TWIC) card and certifies that he or she will be working outside the state or county of registration during the open hours of early voting and Election Day, and has no specific out-of-county or out-of-state address to which mail may be sent or received during such time.
13. The voter is a member of the military or is an overseas citizen.

WHAT IS THE PROCESS FOR REQUESTING ABSENTEE BALLOT?

Download an Absentee Request Form from www.marionvotes.com. Or send a request by mail, fax or email with an attached document which includes a scanned signature and the following information directly to our office:

1. Name of the registered voter
2. Address of the voter's residence
3. Voter's social security number

4. Voter's date of birth
5. Address to mail the ballot outside the county (this applies only when the reason for voting by mail involves that the voter will be outside of the county during early voting and on election day)
6. The election in which the voter wishes to participate. If the election involves a primary, the political party in which the voter wishes to participate.
7. Reason the voter wishes to vote absentee. If applicable, a copy of the CDL containing the CDL number or the TWIC card must be included in the voter's request.
8. Voter's signature

A request that contains this information will be processed and a ballot will be mailed to the voter.

Is any additional information required for individuals who have registered to vote by mail?

Unless an individual who has registered to vote by mail is on the permanent absentee voting register, that person must appear in person to vote in the first election after the registration becomes effective. If a by-mail registrant has already voted in person since the registration, then no additional information will be required to vote by mail.

How can a person who possesses a valid commercial driver license (or the spouse of a person possessing a valid commercial driver license) or a transportation worker identification credential and who will be working outside the county of registration during the early voting period and all day on election day vote? If the voter (or spouse) possesses a valid commercial driver license or the voter possesses a valid transportation worker credential card and does not have a specific out-of-county or out-of-state location to which mail may be sent or received during the early voting or Election Day hours, the voter may:

- a. Complete an application to vote absentee by mail at the Marion County Election Commission office; or
 - b. Send a written request that contains the information discussed in the question above;
and
 - c. Provide a copy of the current commercial driver license which contains the commercial driver's license number or a copy of the current transportation worker credential card;
 - d. Provide the voter's current residential address and any mailing address to which the ballot shall be mailed.
-

When may a registered voter apply to vote by mail?

A registered voter may request an application for by-mail ballot no earlier than ninety (90) days before the election and no later than ten (10) days before the election. To be processed for the next election, the application must be received by the election commission no later than ten (10) days before the election.

For the May 5, 2026 Election:

1st Day to Request Absentee Ballot..... February 4, 2026
Last Day to Request Absentee Ballot..... April 25, 2026

For the August 6, 2026 Election:

1st Day to Request Absentee Ballot..... May 8, 2026
Last Day to Request Absentee Ballot..... July 27, 2026

For the November 3, 2026 Election:

1st Day to Request Absentee Ballot..... August 5, 2026
Last Day to Request Absentee Ballot..... October 24, 2026

To be counted, when must the ballot be received by the election commission?

The county election commission must receive the ballot by mail no later than the close of polls on Election Day. Once the election commission issues an absentee by-mail ballot to a voter, the voter can only vote by mail.

What if I do not receive or ruin my ballot and can no longer use it?

If a voter notifies the election commission that he or she has “spoiled” a ballot or has not received the ballot, the election commission shall note on the records that subsequent supplies have been sent and supply the voter with subsequent voting supplies.

What if I do not provide all of the information required on the by-mail ballot application?

The county election commission will reject the application and return the application to the voter immediately by mail to be completed and returned again. If time permits, any rejected application must be corrected and returned to the County Election Commission by the seventh (7th) day before the Election.

Can the ballot be hand delivered?

No. The by-mail ballot must be received by the county election commission office through the postal mail with a postmark.

MILITARY/OVERSEAS VOTING

Military personnel, their family members and overseas voters (UOCAVA voters) may receive their absentee ballot via e-mail upon request. UOCAVA voters may track when the ballot was received by their local county election commission office. The voted ballot must be received by the local county election commission office by the close of polls on Election Day to be counted.

If you are not in the military, a family member of the military, or an overseas citizen, these instructions do not apply to you, and you may not use the Form 76. (Please refer to Absentee Voting.)

Who may apply to vote absentee under T.C.A. § 2-6-502?

To vote pursuant to the above statute, an individual must fall into one of the following categories.

MILITARY PERSONNEL: Persons who are United States citizens, residents of Tennessee and members of the Uniformed Services (i.e., armed forces personnel), and their family members.

"Armed forces personnel" is defined in T.C.A. § 2-1-104(1) as members of the Army, Navy, Air Force, Marine Corps, Coast Guard, Environmental Science Service Administration, Public Health Service of the United States or members of the Merchant Marine of the United States, and their spouses and dependents.

CIVILIANS OUTSIDE U.S.: Persons who are United States citizens, residents of Tennessee, and who are currently residing overseas.

OVERSEAS CITIZEN: A United States citizen who resides outside the U.S. and, but for living outside the U.S., would be qualified to vote in Tennessee.

PERSONS BORN OVERSEAS: A person who has never lived in the U.S. but has a parent who is eligible to vote in Tennessee may vote in Tennessee in the same voting residence claimed by the parent.



Must I already be a registered voter to vote in Tennessee pursuant to this provision?

No. If you meet the qualifications to register to vote in Tennessee but have not registered prior to requesting an absentee ballot and you fall into one of the above categories, your application for absentee ballot will be treated as an application for temporary registration.

Normally, an individual who registers to vote by mail must appear in person in the first election the person votes in after such registration becomes effective. This provision is waived in the case of military personnel, their family members, or overseas citizens. However, since this is only a temporary registration, once you are no longer eligible to vote under this provision of the law, you must complete a voter registration form and submit the form to your local county election commission prior to voting in any subsequent election.

If you are a registered voter prior to requesting an absentee ballot under this provision, the above information does not apply to you.

When may a registered voter or individual who meets the above requirements apply to vote by absentee ballot?

Applications may be received no earlier than January 1 of the year in which the election is to be held unless the election is to be held less than ninety (90) days after January 1 of the calendar year. In that case, the application may be received no earlier than ninety (90) days before the election and no later than ten (10) days before the election.

What is the process for requesting an absentee ballot?

An individual who meets the above requirements may request an absentee ballot by completing a Federal Post Card application, also known as a “Form 76 or FPCA” (herein Form 76).

The Federal Voting Assistance Program provides an **online version of the Form 76** that a voter may complete and send to the local county election commission. (Go to the bottom of the page and click “Click Here To Get The Form.” For information on Tennessee click the “states pages” and then Tennessee.) Once you have provided all the information needed to obtain a ballot, print the form and sign the application. Go to www.fvap.gov to download the form.

How do I submit the request or application to my local county commission?

The form may be mailed or emailed with an attached document that includes a scanned signature to the Marion County Election Commission office .

To be counted, when must the voted ballot be received by the county election commission?

The voted ballot must be received by mail by the close of the polls on Election Day. If the ballot is rejected, the registered voter will be notified that the ballot was rejected and why the ballot was rejected.

Must I submit an application for each election in the upcoming year?

No. The voter will receive absentee ballots for all regularly scheduled elections for the calendar year in which the request is submitted. Note that it is the voter's responsibility to keep the local county election office informed of any changes of address. The ballots will be mailed or e-mailed, depending on the choice of the voter, to the address that is originally submitted to the local county election office until further notice from the voter.

What if I do not receive or ruin my ballot and can no longer use it?

If a voter notifies the election commission that he or she has "spoiled" a ballot or has not received the ballot, the election commission shall note on the records that subsequent supplies have been sent and supply the voter with subsequent voting supplies.

After timely requesting an official absentee ballot, Armed Forces personnel and overseas voters who feel that there may not be a sufficient amount of time to receive and then return the voted ballot may also use the Federal Write-In Absentee Ballot (FWAB).

Instructions for completing an FWAB may be found at
<https://www.fvap.gov/uploads/FVAP/Forms/FWABwithOMBFinal.pdf>

To obtain a FWAB see your voting officer or you may print the ballot at
<https://www.fvap.gov/eo/overview/materials/forms>

For Security Envelope -

<https://www.fvap.gov/eo/overview/materials/forms> For Return Envelope -

<https://www.fvap.gov/eo/overview/materials/forms>

Note: If both ballots are received prior to the close of the polls on Election Day, the county election commission will count the official ballot it provided to the voter.

What if I do not provide all of the information required on the by-mail ballot application?

The county election commission will reject the application and return the application to the voter immediately by mail to be completed and returned again.

How may I receive my absentee ballot?

Tennessee allows you to receive an absentee ballot by mail or e-mail. Please indicate how you would like to receive your absentee ballot on your request. If you indicate e-mail, provide your e-mail address (on the Form 76 your e-mail address should be provided in Block 2) with the request. If you do not indicate how you want your absentee ballot sent, the absentee ballot will be mailed. Tennessee does not allow you to receive your absentee ballot by fax.

May I track my absentee ballot?

Yes. Go to [Tennessee's voter lookup page](#) on the Division of Elections homepage. Enter your information and you will be able to track when the ballot was received by the Marion County Election Commission office. If you need assistance, contact your local county election commission office.



www.fvap.gov

VOTING RESTORATION FOLLOWING FELONY CONVICTION

Background:

Tennessee legislation HB 445 / SB 407, effective May 2, 2025, introduces a streamlined process for restoring the right to vote after a felony conviction. The law now permits Tennessee circuit courts to restore **citizenship rights partially**, specifically including the right to vote—without restoring full citizenship. It also eliminates the use of the outdated Certificate of Restoration (COR).

3 CATEGORIES OF APPLICANTS FOR RESTORATION

1. Convicted On or Before May 17, 1981

You may register to vote **without a court order**. The revised voter registration application will allow you to attest to the date of your conviction. Unless there is evidence of another felony conviction, your application will be processed.

2. Convicted On or After May 18, 1981,

You may register to vote **with court order** ([sample](#)) “Restoration of Citizen Rights – Petition” <https://tncourts.gov/administration/judicial-resources/forms-documents/court-forms>

To complete the process:

- **Submit a certified copy** of the court order to the Administrator of Elections (AOE)
- Submit a **Sworn Statement** ([available online](#)) [https://sos-prod.tnsosgovfiles.com/s3fs-public/document/SS-3040%20\(05-25\).pdf](https://sos-prod.tnsosgovfiles.com/s3fs-public/document/SS-3040%20(05-25).pdf) confirming:
 - No restitution is owed
 - No court costs are owed (unless documented as indigent by the court)
 - You are current on all child support obligations
- The AOE will forward your materials to the **Coordinator of Elections (COE)** within 5 business days.

3. Convicted On or After May 18, 1981,

You may register to vote **with a court order** issued on or after May 2, 2025

- File a **certified copy of the new court order** with the AOE (Sworn Statement is no longer required in this case).
- **Each felony conviction must be covered by an individual court order.** This includes:
 - Multiple convictions
 - Out-of-state or federal convictions

Article 4, §2 of the Tennessee Constitution provides that the Tennessee legislature may deny the right to vote to persons convicted of "infamous" crimes. Pursuant to this provision in the Tennessee Constitution, the Tennessee legislature has excluded individuals convicted of various felonies from the right of suffrage.

However, the legislature has also established conditions and procedures through which individuals who have lost their voting rights may regain them. The manner in which a person may restore a lost voting right depends upon the crime committed and the year in which the conviction occurred.

A Restoration of Voting Rights Form can be obtained from the Marion County Election Commission or the Marion County Court Clerk's Office.

The restoration of voting rights form may be used to restore an individual's voting rights for a felony conviction on or after May 18, 1981. **Note:** For each felony conviction imposed on or after May 18, 1981, whether it is a federal conviction, a state conviction within Tennessee or a state conviction from another state, a separate restoration of voting rights form must be completed for each felony conviction with a different docket/case number.

The form must be completed by an agent, such as a probation/parole officer or criminal court clerk, who has the authority to provide the required information regarding the individual's conviction, final release date and information regarding restitution or court cost. The person convicted of the felony offense may not complete the restoration of voting rights form. Once the form(s) are completed, the form(s) must be submitted to the local county election commission office in the county in which the individual resides.

The restoration of voting rights form only restores an individual's voting rights. An individual's citizenship rights must be restored through a court order.



WHERE CAN I FIND A SAMPLE BALLOT BEFORE THE ELECTION?

Before Early Voting and Election Day, a sample ballot will be published in the local Marion Tribune. The sample ballot will also be available on our website – www.marionvote.com Sample ballots will be posted at the Early Voting Polling place as well as each polling place on Election Day.

WHERE CAN I FIND INFORMATION ON CANDIDATES AND REFERENDUMS ON THE BALLOT?

The Election Commission only qualifies the candidates, prepares the ballot and administers the election. Information about individual candidates, their biographies, views on issues, etc. may be obtained from the local media and from the candidates themselves.

ARE YOU INTERESTED IN HELPING WITH THE ELECTION?

What is a Poll Worker?

Poll Workers are patriotic Marion County voters that believe in the greatness of our republic and are willing to set aside time in their busy lives for a small stipend to ensure that the integrity of every vote cast is protected.

Poll Workers are appointed by the Marion County Election Commission prior to each election. For every county-wide election, the Marion County Election Commission relies on approximately 130 poll workers to staff the 17 polling places throughout Marion County and staff the Early Voting site.

The greatest benefit to being a poll worker is the gratification derived from your active participation in the election process.

If you would like to join our team and become a Marion County Poll worker, please go to our website <https://marionvotes.com/poll-workers/> and complete the [POLL WORKER APPLICATION](https://marionvotes.com/wp-content/uploads/2021/12/2021-Pollworker-Employment-Application.pdf). (<https://marionvotes.com/wp-content/uploads/2021/12/2021-Pollworker-Employment-Application.pdf>)

Marion County Election Commission

109 Academy Street

Jasper, TN 37347

423-942-2108

marion.commission@tn.gov